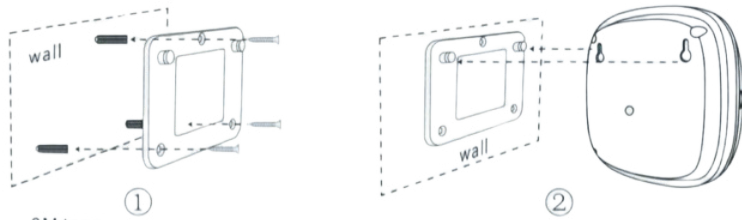


## Wall mounting

Note: Always use the screws and mounting plate to attach Wally to a wall. The 3M adhesive strip alone is insufficient.



## Problem solving

When Wally has been inactive for 7 days, the device goes into 'deep sleep'. You start Wally again by removing/replacing the battery.

If Wally does not work, open the Aemster APP and check:

- whether the current time is selected
- whether the current day of the week is selected
- whether the operating period is on/off

In case you have forgotten the Aemster APP password:

- press and hold the reset button inside the diffuser for 3 seconds to reset the device to password 8888

## Cleaning Wally

Every time you refill your bottle or use a new scent, we recommend cleaning Wally.

1. Turn Wally off by moving the small slider on the inside on 'power'
2. Unscrew the empty bottle and fill it with approximately 10ml Aemster diffuser cleaner
3. Turn Wally on by sliding it back on 'battery' and let it diffuse for 10-15 minutes.
4. Unscrew the bottle and remove the diffuser cleaner
5. Fill the bottle with your Aemster fragrance oil

# AEMSTER



## Specifications:

Product name : Wally  
Control : Bluetooth App  
Capacity : 100ML  
Dimension : 15cm"W x 16cm"H  
Weight : 0.5 kg  
Input voltage: USB5V 300mA MAX

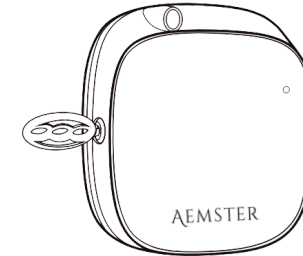
## Aemster

Uilenstede 475, 1183AG Amstelveen,  
NL +31 (0)85 130 84 91  
hello@aemster.com  
www.aemster.com  
Chamber of Commerce: 81517629

# Manual Wally

Your Scent diffuser / Aroma Diffuser

*The secret art of creating beautiful scented rooms.*



Congratulations on your new aroma diffuser, called Wally. This manual shows you how to set up and use your Wally diffuser for the optimal scent experience in your room.

## Before you start:

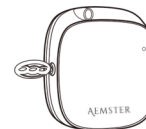
- The diffuser must always remain upright; if it falls over, the scent oil will leak out.
- Keep out of reach of children.
- Prevent the fragrance oil from coming into contact with delicate surfaces.
- Do not use the aroma diffuser if any part is broken.



## Nebulizing technology and performance

Wally's cold air nebulizing technology spreads the scent throughout the room in ultra-fine, dry little particles. This results in a consistent, even and perfectly balanced scent in your environment. Place the Wally in a location where you can take advantage of the natural airflow and try different locations and settings until you are satisfied with the scent experience.

## Components



Main body



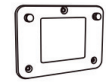
Empty bottle



Key and lock



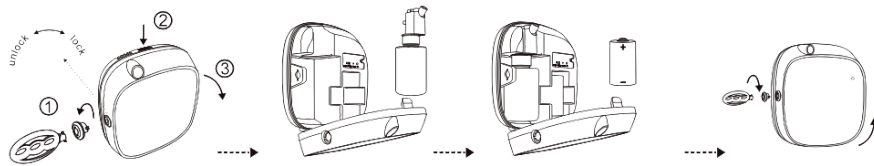
Screws



Mounting plate

### 1. Pour the scent oil into your Wally

1. Turn the key and unlock Wally - carefully pull the lock out of Wally
2. Press the button at the top and open Wally
3. Pull the bottle including the atomizer head out of Wally
4. Unscrew the empty blue bottle from the atomizer head
5. Fill the bottle with the Aemster scent oil (fill up to a maximum of 80%)
6. Twist the bottle onto the atomizer head and place it back into the device
7. Insert the D battery
8. Slide the button on the inside of the device to 'battery'
9. Give Wally 2 minutes to start up the first time
10. Lock Wally with the key including the lock
11. Remove the protective foil from the front



### 3. Adjusting the intensity

Open the Aemster App and set the desired nebulization duration.

Tip: Wally is a powerful scent diffuser, start at the lowest level and intensify the scent experience from there. The diagram below shows the settings of the different levels

Level	Nebulization	Pause	Consumption
G1	3s	900s	0.04
G2	3s	810s	0.05
G3	3s	720s	0.06
G4	3s	630s	0.07
G5	3s	540s	0.08
G6	3s	450s	0.13
G7	3s	360s	0.19
G8	3s	270s	0.24
G9	3s	180s	0.30
G10	3s	90s	0.35

### 2. Connecting to the App via Bluetooth

To set up Wally, you must be within the Bluetooth range of approximately 10 meters. Download the Aemster App now in the Apple store or the Google Play store to continue.

1. Make sure the Bluetooth function of your smart phone device is turned on
2. Open the Aemster App on your smart phone device
3. Select your Wally aroma diffuser
4. Enter the password: 8888
5. Press login



'you can change your password in the App. Go to "About" and press "change password".'

### 4. Personalizing Wally in the Aemster App

You can set 5 automatic working periods. This is very useful if, for example, you want the diffuser to switch on and off at fixed times. This also allows you to increase the intervals. You do this as follows:

- Click on the top work period
- Activate the desired days of the week
- Select grade 1-10 to increase/decrease intensity.

